

INSTRUCTIONS FOR USE



Waterproof Dressing



Moisture Vapour Permeable



Transparent Dressing

INDICATIONS

Osmocol Hydrocolloid dressings can be used as primary and secondary dressings in the treatment of wounds with up to moderate exudate production, and are indicated for prevention of superficial skin damage and treatment of wounds such as:

- Pressure injuries
- Arterial ulcers
- Skin donor sites
- Venous leg ulcers
- Diabetic ulcers
- Partial thickness burns
- Surgical sites

CONTRAINDICATIONS

- Should not be used on infected wounds.
- Should not be used if allergies to any of its components is known.

GENERAL INFORMATION

- Prescribed compression treatment for Venous Leg Ulcer management can continue while using Osmocol Hydrocolloid dressings under the guidance of the clinician-in-charge.
- No known side effects have been observed or reported in the use of Osmocol Hydrocolloid dressings.



EC Representative: Lotus NL B.V. Koningin Julianaplein 10,
1e Verd, 2595AA, The Hague, Netherlands

Manufactured by Shanghai ISO Medical Products Co. Ltd for Sentry Medical Pty Ltd
999 Liuchen Road, Pudong New Area, Shanghai, CHINA

Osmocol® Hydrocolloid Dressing

Osmocol Hydrocolloid dressings - thin, bordered and standard - are produced from mainly carboxymethylcellulose applied to a layer of polyurethane film, producing a semi-occlusive, self-adhesive, water and bacteria proof dressing.

Contact between wound exudate and the hydrocolloid layer produces a biodegradable gel, creating an optimal, moist wound healing environment. Dressing changes are able to take place with minimal disturbance to newly formed tissue.

Each dressing is individually packed, ready for use, and sterilised by gamma irradiation. Osmocol Hydrocolloid dressings are sterile unless the package is opened or damaged, are single use only and should not be re-sterilised.

OPTIONS

REORDER	SIZE	PCS/UNIT
THIN		
AWH001	5cm x 5cm	10
AWH002	5cm x 10cm	10
AWH003	5cm x 20cm	10
AWH004	10cm x 10cm	10
AWH005	15cm x 15cm	5
AWH006	20cm x 20cm	5
AWH007	5cm x 25cm	10
BORDERED		
AWH075	10cm x 10cm	10
AWH100	14cm x 14cm	5
AWH150	15cm x 18cm	5
STANDARD		
AWH050	10cm x 10cm	10
AWH051	15cm x 15cm	5
AWH052	20cm x 20cm	5
SACRAL		
AWH150	15cm x 18cm	5

EXUDATE



LIGHT

THIN

EXUDATE



MODERATE

BORDERED

EXUDATE



MODERATE

STANDARD

EXUDATE



MODERATE

SACRAL

RECOMMEND



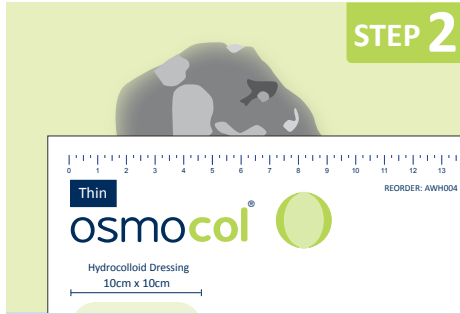
7

ALL



STEP 1

Cleanse wound thoroughly, using local protocols. The skin surrounding the wound should be clean and dry.



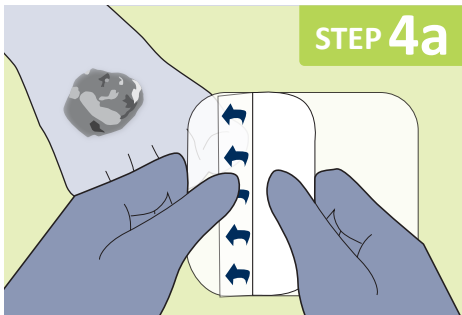
STEP 2

Dressing size is dependent on the wound surface area – the dressing edge should extend 2 - 3cms beyond the wound margin.



STEP 3

While the Osmocol Hydrocolloid dressing remains in its individual package, warm it gently between your hands, to activate the self-adhesive surface.



STEP 4a

Open and remove backing paper from the dressing surface. Without touching the central adhesive dressing surface, apply Osmocol Hydrocolloid dressing to the wound.



STEP 4b

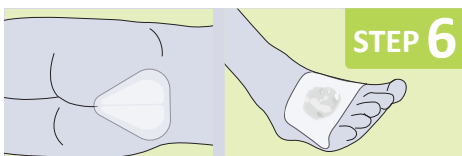
SACRAL

For sacral dressing, gently fold the dressing lengthways. Separate the buttocks and place the dressing from the sacral area, with the base of the dressing covering the coccyx.



STEP 5

Remove the remaining clear film placement layer, once the dressing is insitu.



STEP 6

Smooth the dressing on the wound gently pressing down the edges, ensuring adherence.

DRESSING CHANGE

The clinician-in-charge is responsible for determining the need for dressing changes, dependent on the stage and phase of wound healing and exudate level.

On a clean wound, Osmocol Hydrocolloid dressings should be changed, if and when the hydrocolloid layer becomes clouded and opaque over the wound surface, or if leakage of exudate is noted. Where necrotic tissue is being covered, Osmocol Hydrocolloid dressings should be changed more frequently.

7 days is the maximum period between dressing changes.

To minimise potential damage to fragile skin, the Osmocol Hydrocolloid dressing should be eased off, using a "stretch and release" technique or an adhesive remover wipe.