



**LET US  
CHANGE  
YOUR VIEW**



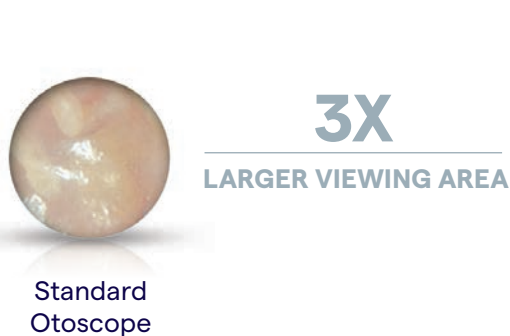
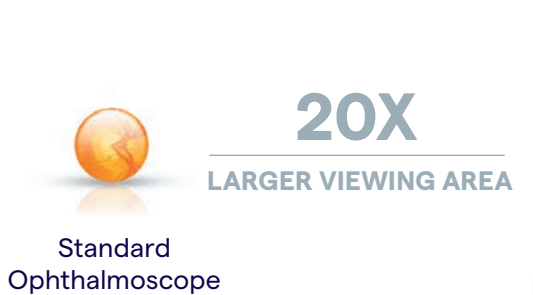
**Hillrom™**

**Welch Allyn® PanOptic™ Plus Ophthalmoscope  
and Welch Allyn® MacroView™ Plus Otoscope**

# BIGGER, BRIGHTER VIEWS

Examining the structure of the eyes and ears is a fleeting yet critical part of the physical exam. That's why we've listened to countless providers, and have redesigned our otoscopes and ophthalmoscopes for enhanced exams.

Take a closer look with our new **Welch Allyn® PanOptic™ Plus Ophthalmoscope** and **Welch Allyn® MacroView™ Plus Otoscope** with bright, white LED technology.





### PANOPTIC PLUS OPHTHALMOSCOPE

- Re-designed with a familiar form factor
- Long-lasting LED illumination
- Eye alignment technology helps guide the patient's gaze for easier entry into the eye

### MACROVIEW PLUS OTOSCOPE

- Long-lasting LED illumination
- For brighter views, pair with new Welch Allyn LumiView Clear ear specula
- Focus-free design



## SWITCH FROM OPTICAL TO DIGITAL

The PanOptic Plus Ophthalmoscope and MacroView Plus Otoscope come digital-ready. Add-on the Welch Allyn iExaminer Smartbracket and transform an optical exam to capture photos and video.

## CLEARING THE PATH TO BRIGHTER VIEWS

Our new LumiView™ clear ear specula is one of a kind, with 4X brightness through an adult specula when compared to a black specula. Plus, it's backwards compatible to work universally on all Welch Allyn otoscopes.





## COLLABORATIVE CARE MADE EASIER

Our Plus devices let you move from optical to digital in a few clicks, expanding your capabilities. Through the iExaminer Pro App you capture and send eye and ear images for tracking, trending and easy consultations with specialists.

Explore our new systems with Plus models or update your device heads which are backwards compatible.



See for yourself how Hillrom is bringing the future of care into view at [hillrom.com/physicalexam](http://hillrom.com/physicalexam).

**hillrom.com**

The PanOptic is intended to be used by clinicians and medically qualified personnel for examination of the retina, cornea, aqueous, lens and vitreous of the eye under illumination and magnification on pediatric and adult patients. The MacroView is intended to be used by clinicians and medically qualified personnel for examination of the external ear, ear canal, and tympanic membrane under illumination and magnification on pediatric and adult patients. The otoscope is also intended to assess the flexibility of the tympanic membrane through air pressure and for general illumination of the oral and nasal cavities. Medical device (93/42/EEC): Class I (CE) Manufacturer: Welch Allyn, Inc., 4341 State Street Road, Skaneateles Falls, NY 13153 USA. EC Rep.: Welch Allyn Limited, Navan Business Park, Dublin Road, Navan, County Meath, C15 AW22, Ireland. These medical devices are a regulated health product which, pursuant to such regulation bears a CE mark. Carefully read the detailed instructions for safe and proper use included in the documents accompanying the medical devices. The personnel of healthcare establishments are responsible for the proper use and maintenance of these medical devices. Hill-Rom reserves the right to make changes without notice in design, specifications and models. The only warranty Hill-Rom makes is the express written warranty extended on the sale or rental of its products.